

TEN SERIES

MODEL ESPS/ESPT SINGLE PANEL SHOWER/TUB SLIDERS

FEATURES -

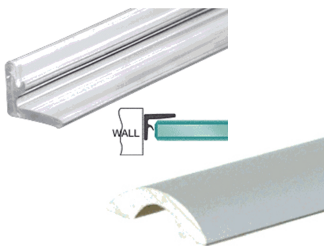
- Sliding panel with fixed panel (and 90 degree panel) for use on tiled or fabricated shower receptor or bath.
- Frameless 10 mm (3/8") tempered safety glass with flat polished edges.
- Heavy anodized aluminum sliding door track supported by side wall and thru-glass clamps. Requires in wall bracing.
- Minimal use of highest quality plated solid brass components secured through pre-drilled holes in glass.
- Standard height = 76" for shower, 58" for tub. Custom size/design available to suit almost any application.



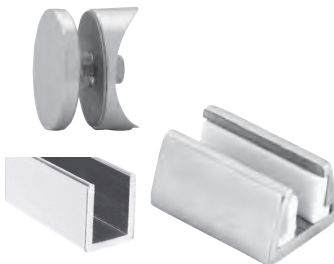
1-11/16" diameter sliding door track with precision ball bearing panel rollers and concealed rubber panel stops.



Includes Concave back to back knob. Variety of other Designer knob and pull options available.



Water protection featuring vinyl door seal between panels, at wall and a low profile half round water dam on threshold.



Fixed panel(s) supported by u-channel extrusion along bottom and wall and thru-glass clamp into header. Sliding panel centered by floor mounted guide.

See reverse for model #'s for applicable enclosures

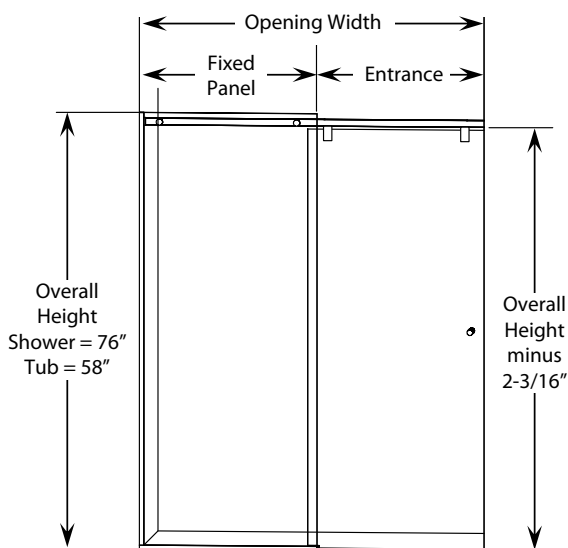
OPTIONS -

- Glass available in a variety of Designer Colours & Textures. Refer to options sheet for additional information.
- Trim available in Silver (S), Gold (G), Brushed Nickel (BN), Oil Rub Bronze (ORB).
- Variety of Designer Accessories available. Refer to options sheet for additional information.
- ClearShield (CS) glass protection coating.



**HY-LINE
SHOWER DOORS**

Shower Slider Model #	For Openings	Fits
ESPS-48	46" to 48" x 76" tall	HYTEC: ACR483, ACR3769, ACR3774, ACR3778, ACR3783, ACR3788 MAAX: 105059, 105060, 105060, 48" ACRYLIC LOW THRESHOLD BASES Note - can not be used with wall kits VENCO: 4834 BASE, AVB48 ACRITEC: 48" WIDE SHOWER BASES
ESPS-50	48" to 50" x 76" tall	
ESPS-52	50" to 52" x 76" tall	
ESPS-54	52" to 54" x 76" tall	HYTEC: ACR3779, ACR3784, ACR3789 ACRITEC: 54" WIDE SHOWER BASES
ESPS-56	54" to 56" x 76" tall	
ESPS-58	56" to 58" x 76" tall	
ESPS-60	56" to 60" x 76" tall	HYTEC: 14810/11, ACR603, ACR3770, ACR3775, ACR3780, ACR3785, ACR3790, ACR3793, ACR3798L/R MAAX: 105055L/R, 105055L/R, 105056L/R, 105056L/R, 105057, 105057, 105058, 105058 Note - can not be used with wall kits VENCO: 6030 BASE, 6034 BASE, AVB60, AVB6030L/R, AVB6030LT, AVB6032LT, AVB6034LT ACRITEC: 60" WIDE SHOWER BASES
ESPS-66	64" to 66" x 76" tall	HYTEC: ACR3799
ESPS-Q	Custom sized shower slider. Contact for information.	
Tub Slider Model #	For Openings	Fits
ESPT-60	58" to 60" x 58" tall	60" WIDE SKIRTED TUBS Note - can not be used with wall kits
ESPT-66	64" to 66" x 58" tall	66" WIDE SKIRTED TUBS Note - can not be used with wall kits
ESPT-72	70" to 72" x 58" tall	72" WIDE SKIRTED TUBS Note - can not be used with wall kits
ESPT-Q	Custom sized tub slider. Contact for information.	



NOTE -

- ESPS/ESPT doors are considered heavy doors and as a result require backing in wall along vertical centreline. Refer to Structural Requirements sheet for more information.
- Wall conditions are to be flat. Walls that lean more than 1/4" from plumb, walls that are stepped, and/or have raised accent tiles, will require custom modifications. Contact for assistance.
- When ordering textured glass or ClearShield glass protection coating, specify which wall door is to close against.

