

# CUSTOM DOOR QUOTE REQUEST FORM

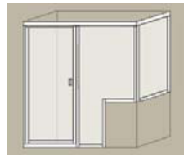
|                                      |     |
|--------------------------------------|-----|
| FIVE SERIES - 5 mm GLASS             | ( ) |
| SIX SERIES - 6 mm GLASS              | ( ) |
| TEN SERIES - 10 mm GLASS             | ( ) |
| HL SERIES - 6 or 10 mm GLASS         | ( ) |
| ESTATE SERIES - 6, 10 or 12 mm GLASS | ( ) |
| METAL FINISH:                        |     |
| GLASS FINISH:                        |     |
| OPTIONS:                             |     |

|                  |  |
|------------------|--|
| JOB NAME:        |  |
| WHOLESALER:      |  |
| CONTACT:         |  |
| PHONE # / EMAIL: |  |
| NOTES:           |  |
|                  |  |
|                  |  |
|                  |  |

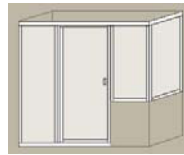
## 90 DEGREE WITH STEP-UP IN-LINE & RETURN PANEL CONFIGURATIONS:



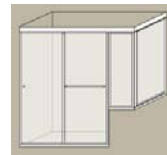
Door, step-up in-line & 90 degree return



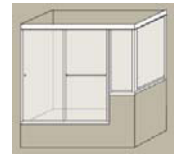
Door, notched in-line & 90 degree return



Inline, door, step-up in-line 90 degree return

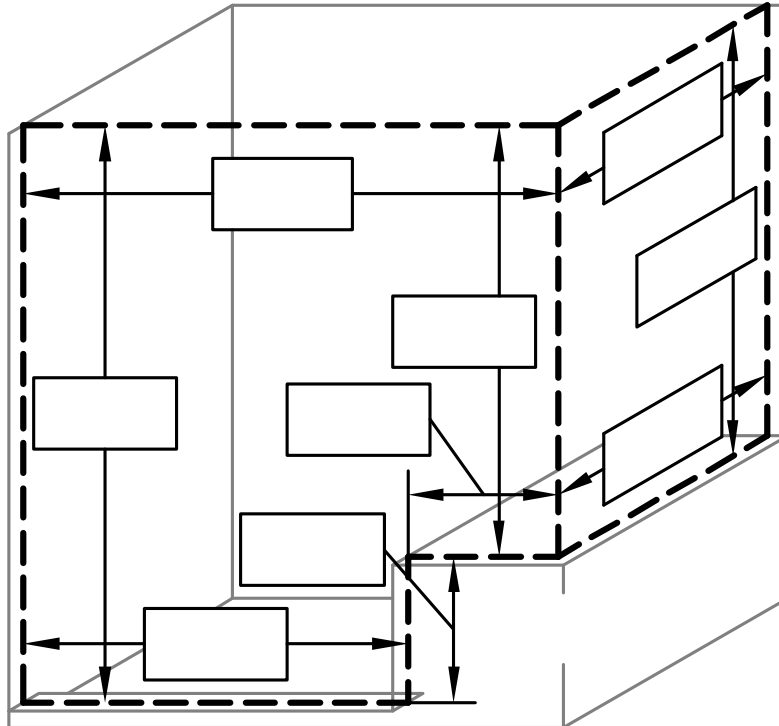


2 panel shower slider, step-up in-line & 90 degree return



2 panel tub slider, step-up in-line & 90 degree return

Circle applicable door configuration and indicate if installation is to be mirror image.  
Provide all centreline dimensions and indicate any wall/sill outages.



ASSIGNED MODEL #: \_\_\_\_\_ QUOTED PRICE: \_\_\_\_\_

**Note – Priced as per information provided. Quote invalid if any changes to dimensions or options. Doors will not be constructed until signed drawing showing all finished opening dimensions is provided. Custom doors are non-cancellable and non-returnable.**